

DOOLIN

The Village of Doolin is traditionally known to be a fishing village however is it now better known as a home of traditional music. This is a prime rural seaside location offering an array of activities and breathtaking scenery, which makes an ideal choice for your holiday break.

Doolin is located 8km from the Cliffs of Moher, 6km from the famous spa town of Lisdoonvarna and just a fifteen-minute drive from the town of Lahinch.



We'll leave the light on for you

Reservations:
Dream Ireland Holiday Homes,
Lodge Wood, Kenmare,
Co. Kerry, Ireland
Tel: +353 (0)64 41170
Fax: +353 (0)64 41839
E-mail: info@dreamireland.com
Website: www.dreamireland.com



Ireland's Leading Holiday Home Rentals

We'll leave the light on for you

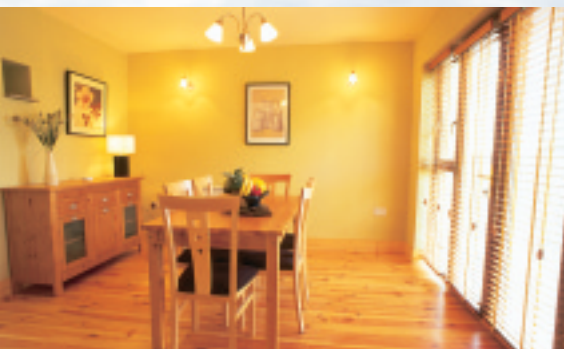
RIVERVALE
HOLIDAY HOMES

DOOLIN, CO. CLARE, IRELAND



THE ACCOMMODATION

Rivervale is a lovely new development of eight holiday homes located just a five minute stroll from the Village of Doolin. These bright and airy houses can accommodate up to 5 people – in one double bedroom, one twin bedroom and one single bedroom with a separate bathroom.



The houses have been fitted out and equipped with high quality furniture and fittings catering to your every need. The open plan kitchen/dining area contains all modern conveniences including electric cooker, microwave, washer/dryer, dishwasher, kettle and toaster.

The lounge area has been tastefully decorated and is furnished beautifully with a cosy suite of furniture, colour television and a welcoming open fire.



LOCAL ACTIVITIES

Dolphin Watching

The mouth of the River Shannon is home to Ireland's only resident community of bottlenose dolphins who thrive in this safe habitat. The estuary provides the dolphins with a rich source of food and a safe habitat for mothers and calves and is one of only six such breeding communities in Europe. The local dolphin watch tours boast a sighting rate of 98% during the months of May to August and operate from the towns of Kilrush and Carrigaholt.



Golf

Doolin has its own excellent nine hole pitch 'n putt course and Lahinch's famous Castle and Old Courses are just a twenty minute drive away

Diving

With its network of sub-marine caves Doolin offers some of the best diving sites on the west coast.

Horse Riding

County Clare is an ideal region to discover on horseback and there are many options available including beach trails.

Beaches

Within a ten-minute drive of Doolin there are two beautiful beaches – Fanore Blue Flag Beach with its fantastic sand dunes and shore fishing and Lahinch Beach which is popular worldwide with surfers.

Traditional Music

Doolin has a reputation as a centre for traditional Irish music and attracts visitors from all over the world.

Walking

Doolin is centrally located on the Burren Way Walking Route, which is a 26-mile (42 km) signposted walking trail from the town of Liscannor, along by the Cliffs of Moher, on to Doolin and into Ballyvaughan.

Caving

The Doolin Cave System was first discovered in 1953 and is over 10.5 km in length incorporating many active underground rivers flowing through the limestone. Guided trips can be arranged locally.



VISITOR ATTRACTIONS

Lahinch Seaworld and Leisure Centre

Seaworld offers a truly unique experience which can be enjoyed by all the family. It provides a wonderful insight into the underwater life of the Atlantic Ocean and the Leisure Centre has a 25-metre pool, kiddie's pool, jacuzzi and sauna.

The Cliffs of Moher

Just a five minute drive from Doolin Holiday Homes are the world renowned Cliffs of Moher. Defiantly standing as giant natural protection against the might of the great Atlantic Ocean the Cliffs rise to over 215 m (700ft) and stretch for over 8km.



The Burren

The northwestern corner of County Clare is home to over 100 square miles of bare pale limestone. This magnificent landscape is truly spectacular and what makes it so unique is the plants and flowers interspersed among the crevices of the rock.

Aran Islands

The Aran Islands are one of the last outposts of Gaelic civilisation. They are stunningly beautiful and feature ancient relics of prehistoric civilisations. Daily boat trips operate from Doolin - which boasts the shortest ferry crossing - to all three of the Aran Islands.

Aillwee Cave

Located just twenty minutes from Doolin, Aillwee Cave is one of the west of Ireland's top tourist attractions with its stalactites, stalagmites, relics of bears and waterfall. Open daily from mid March – October.